



NSW GOVERNMENT



MINISTRY OF TRANSPORT



INVESTING IN A BETTER FUTURE

## Inner West Busway along Victoria Road

---

Friday 7, May 2010

### CHANGES TO THE BRIDGE CONSTRUCTION EXCLUSION ZONE ON THE WATERS OF IRON COVE

The exclusion zone will change to allow work on the marine piers to continue.

On **Wednesday, 12 May 2010**, the navigable (open) channels will change to between piers 3 and 4 and between piers 5 and 6 (Option 9 Map). The change will involve the movement of several large barges.

Please refer to the attached maps and take care when navigating Iron Cove whilst the exclusion zone and opening and closing of channels are put in place.

#### Working hours

Daytime working hours are Monday to Friday 7am to 6pm, and weekends 8am to 4pm. **Exclusion zones are in place 24 hours a day, seven days a week.**

#### Boating safety around exclusion zones on Iron Cove

Exclusion zones are managed so there are always at least two navigable channels open for waterway passage. A navigable channel is the waterway passage between any two adjacent bridge piers.

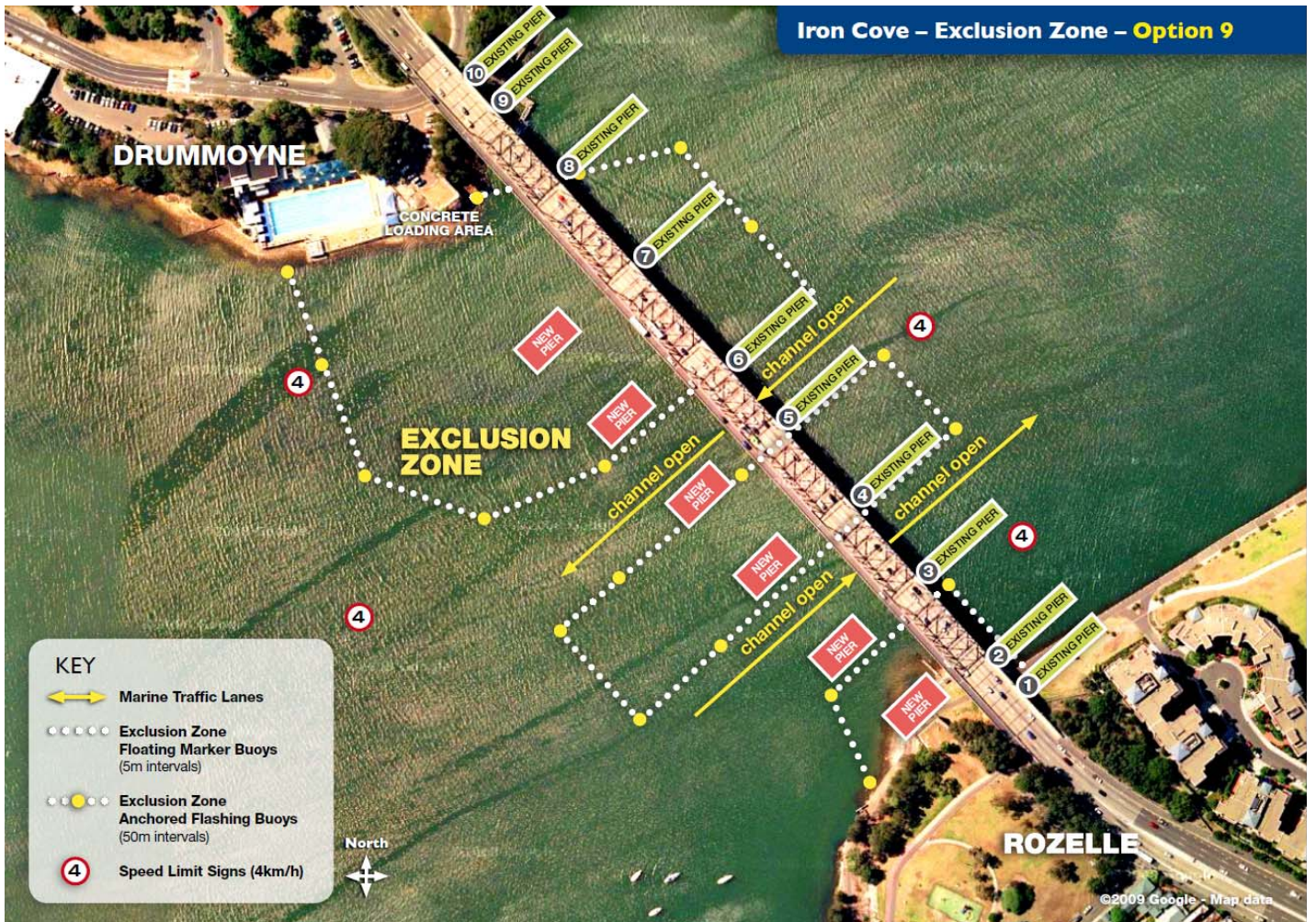
The RTA requests all operators of water vessels remain alert and show extra consideration to the personal safety of all waterway users in this area.

Under the Marine Safety (General) Regulation 2009, all vessels travelling along the course of a channel are required to keep as near to the outer limit of the channel, which lies on its starboard (right) side, as is safe and practicable. In simple terms this means keep to the right.

When there are only two open channels in the exclusion zone, vessels are to use the starboard (right) channel in the direction of travel, ie when travelling into Iron Cove, use the open span closest to the Drummoyne side, and when travelling out of Iron Cove, use the open span closest to the Rozelle side.

**Need more information?** Please call 1300 780 841 or visit [www.innerwestbusway.com.au](http://www.innerwestbusway.com.au). Further information relating to boating safety can be found by visiting the NSW maritime website at [www.maritime.nsw.gov.au](http://www.maritime.nsw.gov.au).

Iron Cove – Exclusion Zone – Option 9



DRUMMOYNE

CONCRETE LOADING AREA

EXCLUSION ZONE

ROZELLE

©2009 Google - Map data

KEY

- Marine Traffic Lanes
- Exclusion Zone Floating Marker Buoys (5m intervals)
- Exclusion Zone Anchored Flashing Buoys (50m intervals)
- Speed Limit Signs (4km/h)

North