



NSW GOVERNMENT



MINISTRY OF TRANSPORT



INVESTING IN A BETTER FUTURE

Inner West Busway along Victoria Road

CHANGES TO THE BRIDGE CONSTRUCTION EXCLUSION ZONE ON THE WATERS OF IRON COVE

An exclusion zone has been created around the construction works for the new Iron Cove Bridge in the waters of Iron Cove. This is to guide waterway users safely around the construction works in Iron Cove.

In general, the exclusion zone extends approximately 150 metres to the west and 50 metres to the east of the existing Iron Cove Bridge. Flashing marker buoys mark out these areas. A four knot restriction applies to the area adjacent to the exclusion zone.

The specific areas of the exclusion zone and the navigable channels will change as the work areas change.

There will be a change to the exclusion zone on 22 August 2009

The piling work for Pier 3 will be completed ahead of schedule. Work on the piles for Pier 4 will start earlier than expected.

Before the piling work for Pier 4 starts, the bridge construction exclusion zone will change on Saturday, 22 August 2009.

The new exclusion zone will close the channels from pier 5 of the existing Iron Cove Bridge to the Rozelle shoreline.

The navigable (open) channels will extend from pier 5 of the existing Iron Cove Bridge to the Drummoyne shoreline. Please refer to the attached map for further details.

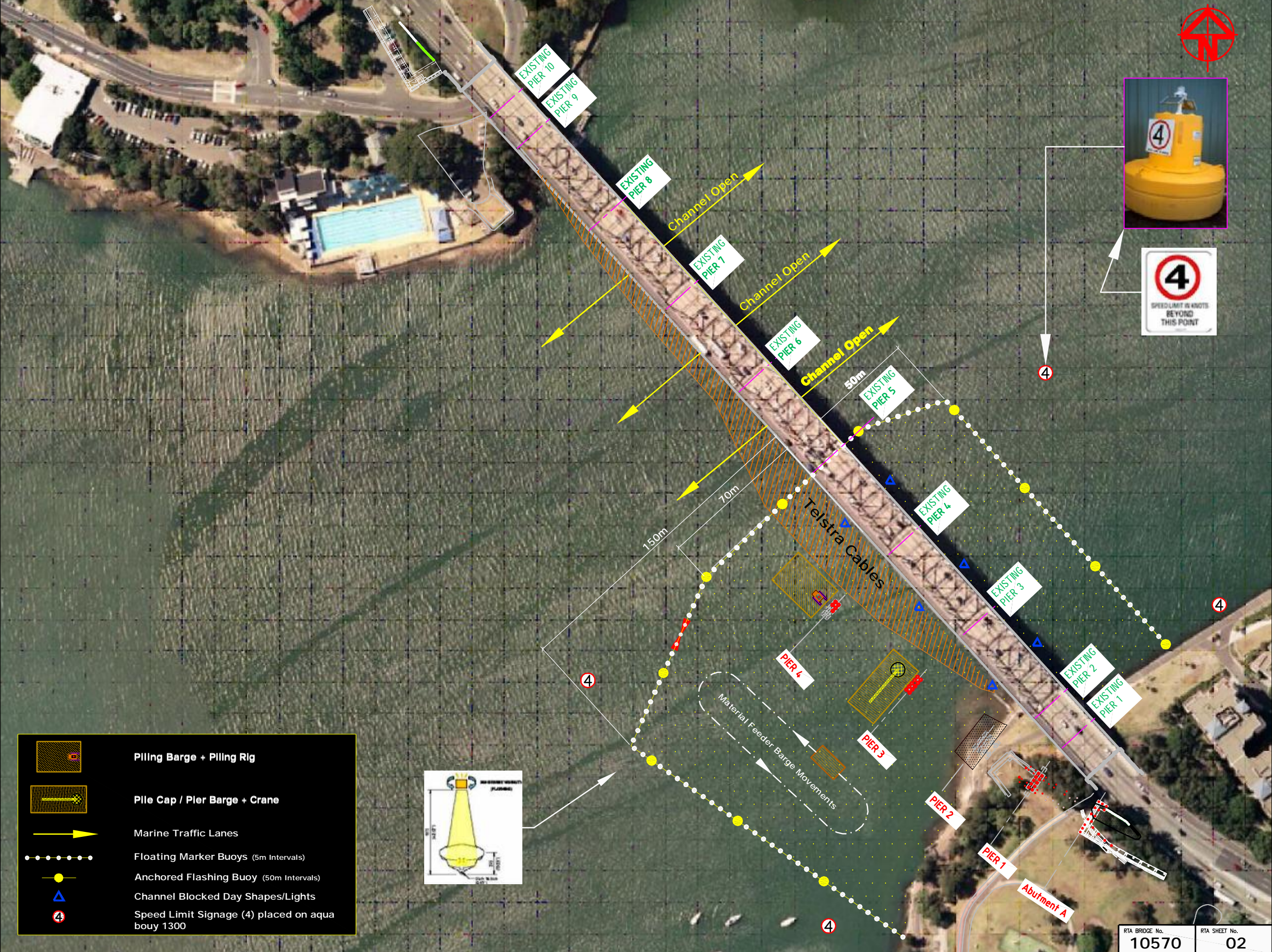
Working hours

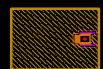




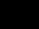

Day time working hours are Monday to Friday 7am to 6pm, and Saturday 8am to 1pm. Exclusion zones are in place 24 hours a day, seven days a week.

Would you like to join our Waterway User Group and be notified about changes to future exclusion zones by SMS or email? Please call 1300 780 841 or visit www.innerwestbusway.com.au and register your details.

Need more information?

Please call the 24 hour community information line on 1300 780 841 or email victoriaroad@btba.com.au. Further information can be found on the Inner West Busway project website at www.innerwestbusway.com.au.



-  Piling Barge + Piling Rig
-  Pile Cap / Piler Barge + Crane
-  Marine Traffic Lanes
-  Floating Marker Buoys (5m Intervals)
-  Anchored Flashing Buoy (50m Intervals)
-  Channel Blocked Day Shapes/Lights
-  Speed Limit Signage (4) placed on aqua bouy 1300

